

## Coude 90° femelle cylindrique orientable - RPC FG



### Filetage femelle BSPP

G 1/8

### Pour tube Ø ext. (mm)

4

### Pression d'utilisation

0 à 10 bar

### Température

0°C à + 60°C

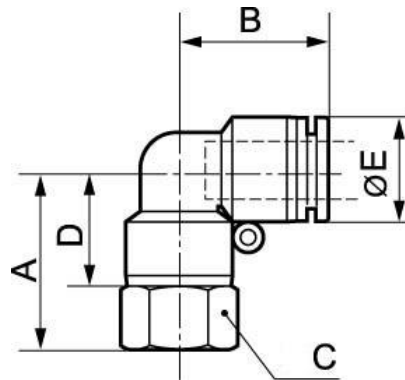
### Matière

Polymère et laiton nickelé

## Description

| Référence         | Filetage femelle BSPP | Pour tube Ø ext. (mm) |
|-------------------|-----------------------|-----------------------|
| <b>RPC FG0400</b> | G 1/8                 | 4                     |
| <b>RPC FG0401</b> | G 1/4                 | 4                     |
| <b>RPC FG0500</b> | G 1/8                 | 5                     |
| <b>RPC FG0501</b> | G 1/4                 | 5                     |
| <b>RPC FG0502</b> | G 3/8                 | 5                     |
| <b>RPC FG0503</b> | G 1/2                 | 5                     |
| <b>RPC FG0600</b> | G 1/8                 | 6                     |
| <b>RPC FG0601</b> | G 1/4                 | 6                     |
| <b>RPC FG0602</b> | G 3/8                 | 6                     |

| Référence         | Filetage femelle BSPP | Pour tube Ø ext. (mm) |
|-------------------|-----------------------|-----------------------|
| <b>RPC FG0603</b> | G 1/2                 | 6                     |
| <b>RPC FG0800</b> | G 1/8                 | 8                     |
| <b>RPC FG0801</b> | G 1/4                 | 8                     |
| <b>RPC FG0802</b> | G 3/8                 | 8                     |
| <b>RPC FG0803</b> | G 1/2                 | 8                     |
| <b>RPC FG1000</b> | G 1/8                 | 10                    |
| <b>RPC FG1001</b> | G 1/4                 | 10                    |
| <b>RPC FG1002</b> | G 3/8                 | 10                    |
| <b>RPC FG1003</b> | G 1/2                 | 10                    |
| <b>RPC FG1201</b> | G 1/4                 | 12                    |
| <b>RPC FG1202</b> | G 3/8                 | 12                    |
| <b>RPC FG1203</b> | G 1/2                 | 12                    |
| <b>RPC FG1402</b> | G 3/8                 | 14                    |
| <b>RPC FG1403</b> | G 1/2                 | 14                    |
| <b>RPC FG1602</b> | G 3/8                 | 16                    |
| <b>RPC FG1603</b> | G 1/2                 | 16                    |



### Dimensions

| Référence  | A mm | B mm | C mm | D mm | E mm |
|------------|------|------|------|------|------|
| RPC FG0400 | 22.5 | 17.5 | 12   | 15.5 | 10   |
| RPC FG0401 | 23   | 17.5 | 17   | 15.5 | 10   |
| RPC FG0500 | 25   | 20.5 | 12   | 18   | 12.8 |
| RPC FG0501 | 25.5 | 20.5 | 17   | 18   | 12.8 |
| RPC FG0502 | 26   | 20.5 | 19   | 18   | 12.8 |
| RPC FG0503 | 28   | 20.5 | 24   | 18   | 12.8 |
| RPC FG0600 | 25   | 20.5 | 12   | 18   | 12.8 |
| RPC FG0601 | 25.5 | 20.5 | 17   | 18   | 12.8 |
| RPC FG0602 | 26   | 20.5 | 19   | 18   | 12.8 |
| RPC FG0603 | 28   | 20.5 | 24   | 18   | 12.8 |
| RPC FG0800 | 26.7 | 22.5 | 14   | 19.7 | 13.8 |
| RPC FG0801 | 27.2 | 22.5 | 17   | 19.7 | 13.8 |
| RPC FG0802 | 27.7 | 22.5 | 19   | 19.7 | 13.8 |
| RPC FG0803 | 29.7 | 22.5 | 24   | 19.7 | 13.8 |
| RPC FG1000 | 30.2 | 26.3 | 19   | 23.2 | 16.8 |

| Référence         | A mm | B mm | C mm | D mm | E mm |
|-------------------|------|------|------|------|------|
| <b>RPC FG1001</b> | 30.7 | 26.3 | 19   | 23.2 | 16.8 |
| <b>RPC FG1002</b> | 31.2 | 26.3 | 19   | 23.2 | 16.8 |
| <b>RPC FG1003</b> | 33.2 | 26.3 | 24   | 23.2 | 16.8 |
| <b>RPC FG1201</b> | 31.5 | 27.8 | 19   | 24   | 19.8 |
| <b>RPC FG1202</b> | 32   | 27.8 | 21   | 24   | 19.8 |
| <b>RPC FG1203</b> | 34   | 27.8 | 24   | 24   | 19.8 |
| <b>RPC FG1402</b> | 33.5 | 29.8 | 22   | 25.5 | 22.7 |
| <b>RPC FG1403</b> | 35.5 | 29.8 | 24   | 25.5 | 22.7 |
| <b>RPC FG1602</b> | 35   | 30.8 | 24   | 27   | 23.8 |
| <b>RPC FG1603</b> | 37   | 30.8 | 24   | 27   | 23.8 |