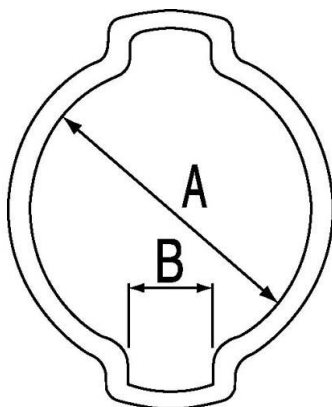


## Colliers à oreilles type standard acier traité



Description		
Référence	Quantité	Ø min./max. (mm)
0709P	10	7-9
0911P	10	9-11
1113P	10	11-13
1315P	10	13-15
1517P	10	14-17
1518P	10	15-18
1720P	10	17-20
1821P	10	18-21
2023P	5	20-23
2225P	5	22-25
2327P	5	23-27



### Dimensions

Référence	A mm	B mm
<b>0709P</b>	7.3	3
<b>0911P</b>	11.3	3
<b>1113P</b>	13.3	3.5
<b>1315P</b>	15.3	3.5
<b>1517P</b>	17.5	4.5
<b>1518P</b>	18.5	4.5
<b>1720P</b>	20.5	5.5
<b>1821P</b>	21.5	5.5
<b>2023P</b>	23.5	5.5
<b>2225P</b>	25.5	6
<b>2327P</b>	27.5	6.5